

AATi Recommended Installation **Guidelines for fixing into concrete.**



DATE	26/09/2017
REVISION	1

1. Ensure the underside of nosing is clean from dust/dirt or any other contaminants.
2. Cut an appropriate size piece of DPC to cover the entire internal side of nosing.
3. Apply Damp Proof Course (Rubberoid - Hyload original DPC) to cover the entire internal face of the nosing.
4. Position AATi nosing with DPC membrane into mould unit and protect as necessary to stop slurry getting on to visible surfaces of the nosing.
5. Mix and pour concrete.
6. Leave to set.
7. Remove from mould as soon as possible and clean as necessary

Fig 1. Section view of fixing detail

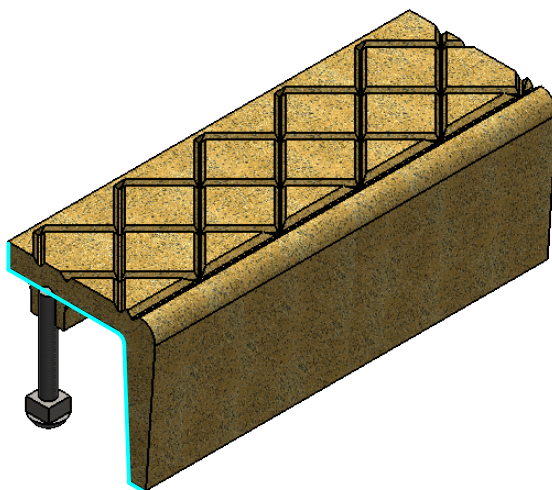
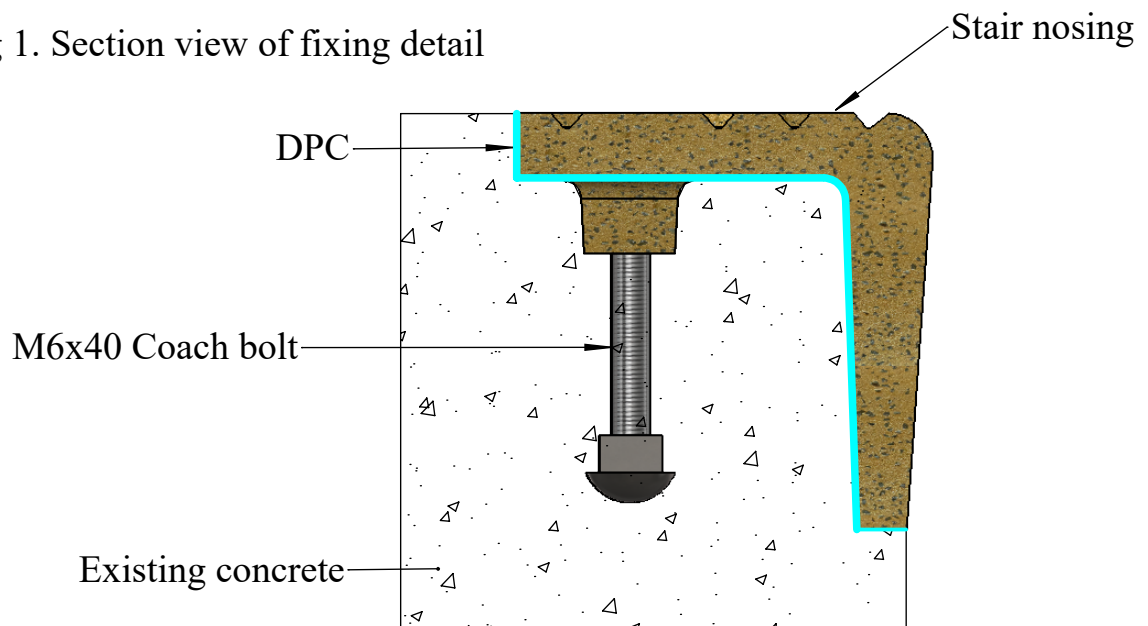


Fig 2. Isometric section view of fixing assembly.

NB: Nosing's must be installed in such a way that standing water is omitted. Please refer to AATi O&M Manual
All AATi products are subject to our manufacturing tolerances and should be taken into consideration when installing