

# AATi Rail

## Project case study

December 2019

### Tottenham Hale Station

**Client:** Network Rail

**Contractor:** Carver Engineering

**Product:** SN93/SL3/140

**Material:** Nickel Bronze

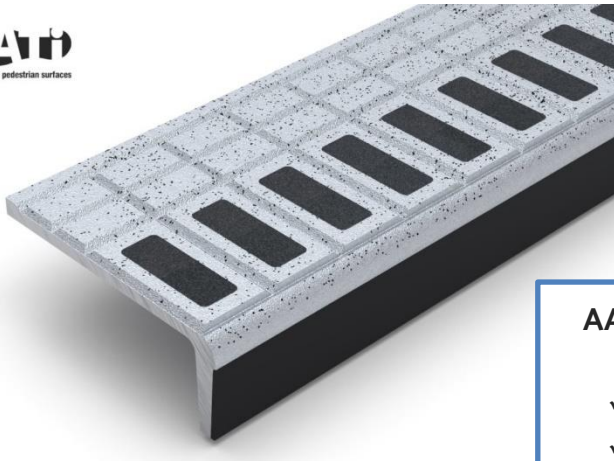


Tottenham Hale Station received a £20m upgrade to increase capacity and create a progressive station that is in-line with the wider regeneration of the Tottenham and the Upper Lea Valley area. Tottenham Hale station will be a focal point of this newly renovated district centre and should be an iconic gateway to surrounding areas.

The station is served by Greater Anglia and Stansted Express which provides a direct service to London Stansted Airport. With a footfall over 17 million per annum (2018) the station demanded a real consideration for long term planning when it comes to capacity infrastructure.

Working with Carver Engineering, AATi Rail supplied **SN93/SL3/140** cast metal anti-slip stair nosings with contrasting anti-slip resin inserts as part of the station upgrade. This AATi anti-slip stair nosing features heavily across the London Underground & UK Rail networks, providing safe performance in wet or dry

conditions whilst demonstrating exceptional product longevity. For further information on AATi's sustainable product offering, please contact a member of the sales team today!



#### AATi type SN93/SL3/140® Sightline™ stair nosing

- ✓ London Underground Approved
- ✓ Cost effective, long term installation
- ✓ High performance in wet and dry conditions

