

AATi Rail

Project Case Study

January 2017

Baker Street Station

Client: London Close Brother Rail Ltd.

Product: SN93/SL3R/280

Material: Nickel Bronze



Baker Street Station is situated on the corner of Baker Street and has a whopping 10 platforms serving over 5 London Underground lines including; Bakerloo line, Jubilee line, Circle line, Hammersmith & City line & Metropolitan line.

Nearby attractions include Regent's Park, Lord's Cricket Ground, the Sherlock Holmes Museum and Madame Tussauds.

Station improvements have been carried out on the station since 2008 providing step free access along with platform extensions and other internal station upgrades.

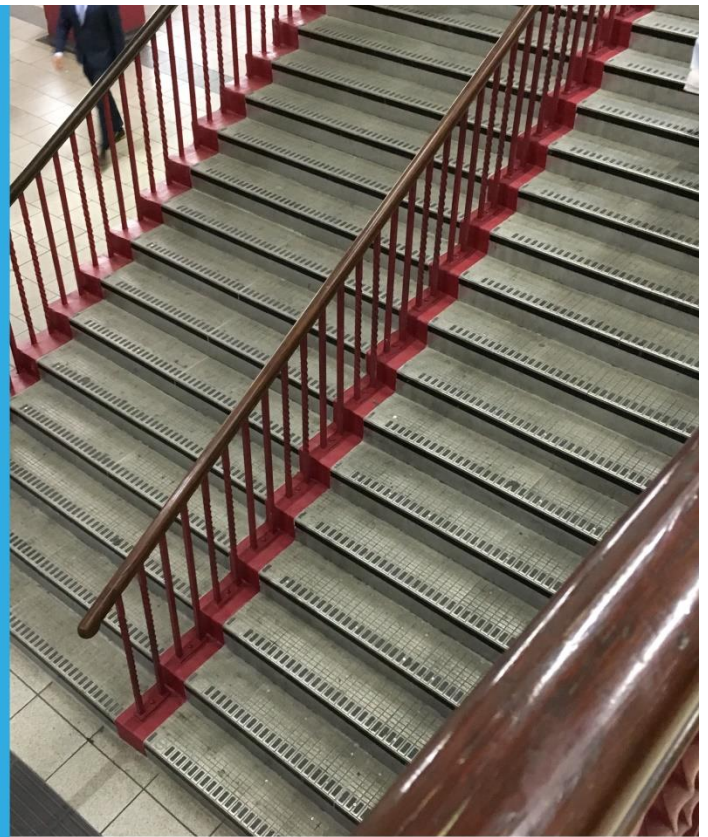
With annual passenger footfall figures in the region of 29 million in 2016, AATi was an obvious choice when selecting stair nosings to cope with the enormous and increasing footfall at the station, not to mention the use of abundant and ungainly heavy wheeled suitcases that appear to continuously damage staircases today.

AATi supplied cast metal anti-slip stair nosings type ref: SN93/SL3R/280 in Cast Nickel Bronze throughout the station.

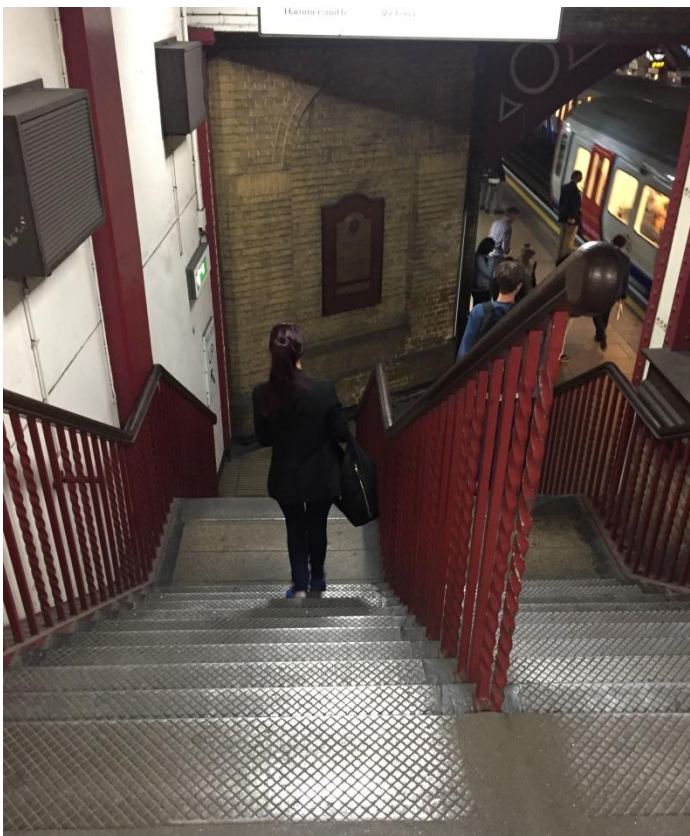
Please take a look at the stairway before and after pictures showing the vast improvements that have been made through the station!



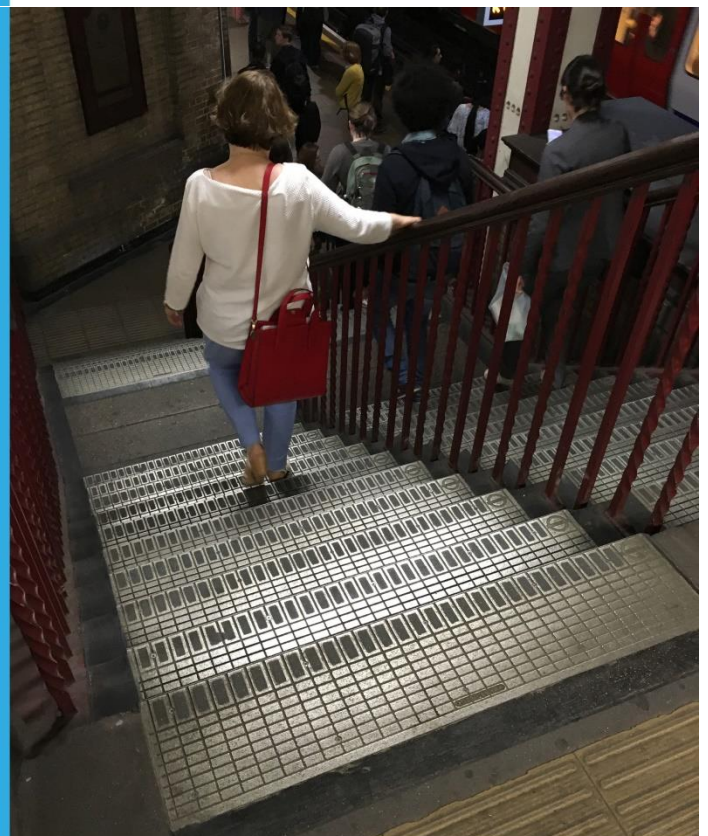
Before



After



Before



After