

AATi

Project Case Study

February 2016

DOHA METRO – Red Line South EAG Mock-up

Client: Qatar Rail

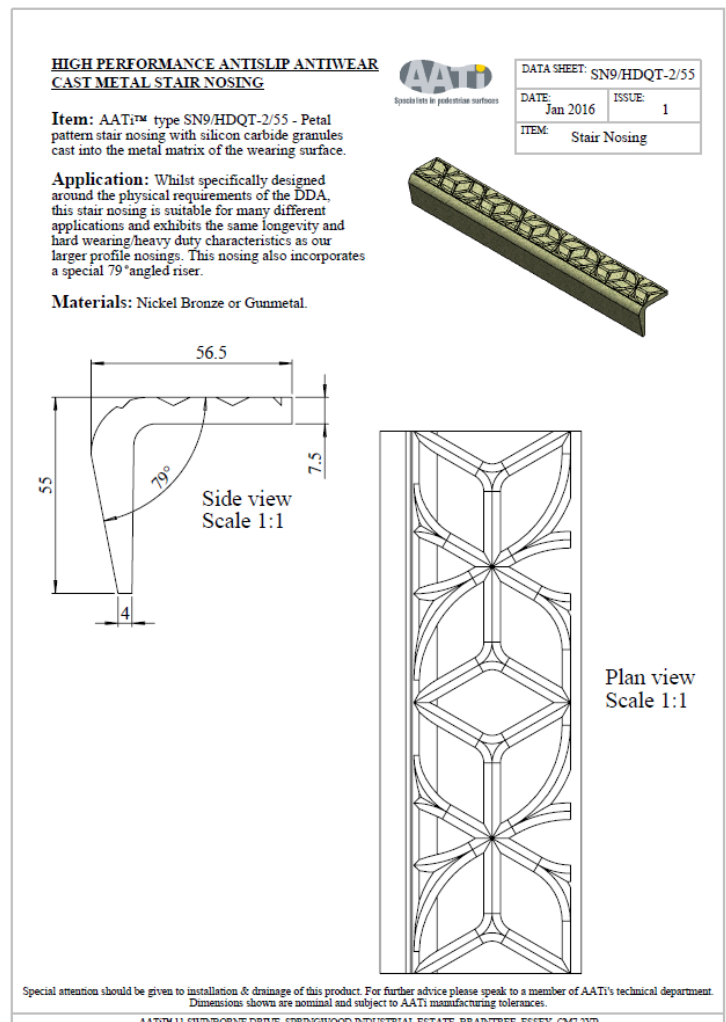
Contractor: FYAP

Product: Bespoke version of type SN9/55 nosing

Material: Nickel Bronze

The Red Line, runs for approximately 42 kilometres from Al Wakra in the south to Lusail in the north. The line also enters Hamad International Airport at Terminal 1 to the centre of the city. The line features 18 stations allowing passengers to transfer from Legtaifiya Station to the Lusail Tram. The other 17 stations are:

- Al Bidda (Interchange station)
- Corniche
- West Bay
- Doha Exhibition and Convention Centre
- Al Qassar
- Katara
- Lusail
- Hamad International Airport
- Qatar University
- Al Wakra
- Ras Bu Fontas
- Economic Zone
- Oqba Ibn Nafie
- Al Matar
- Umm Ghawalina
- Al Doha Al Jadeda
- Msheireb (Interchange station)



AATi supplied a second batch of anti-slip stair nosings type ref: SN9/HDQT-2/55 in Cast Nickel Bronze for the Red Line South Elevated & At Grade mock-up station. This particular nosing exhibited a special 79 degree angled riser to match the steel stair structure. With AATi designing and manufacturing all under one roof the project was completed with ease and within the client's tight build programme.

This is just one example of the unique & professional capabilities at AATi, for further details or for any cast metal enquiries, please contact a member of our team today - info@aati.co.uk.