

AATi Rail

Project case study

2009

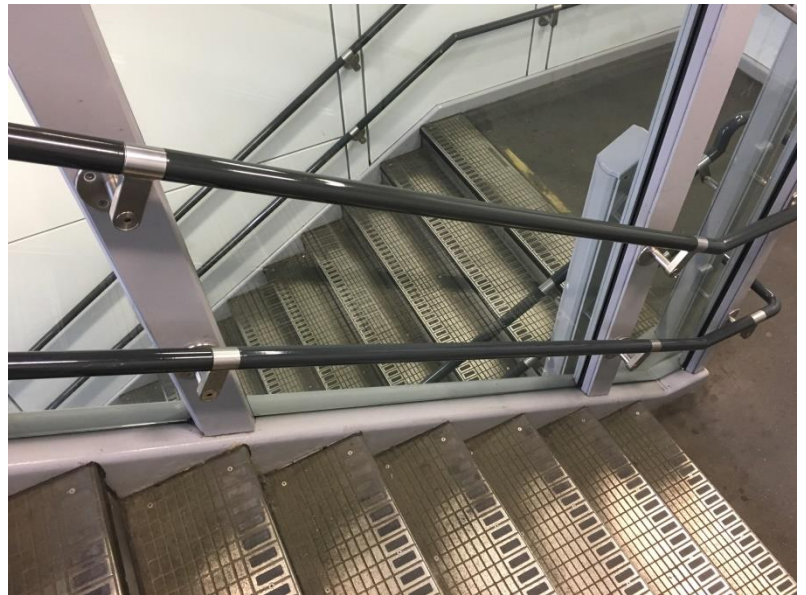
Farringdon Station

Client: London Underground

Contractor: MPG

Product: SN93/SL3/280,
SN93/SL3/300 + Riser plates

Material: Nickel Bronze



A busy station situated in the heart of London's Clerkenwell, Farringdon Underground Station encompasses numerous stair cases to cope with the flowing passengers exiting from the Circle, Hammersmith & City, and Metropolitan lines. Farringdon is located between Kings Cross St. Pancras and Barbican.

Farringdon was actually formerly named Farringdon Street when it first opened in 1863 as part of the original Metropolitan Railway - the world's first underground metro line.

Farringdon is also a stop for the Thameslink route between St Pancras and City Thameslink, however that is expected to change as it becomes a major interchange station between the two largest transport infrastructure programmes currently under construction in the city: Crossrail and the Thameslink Programme, both scheduled for completion in 2018–2019.

AATi worked closely with London Underground engineers to design a fully clad stair system that was, hardwearing, compact and easily to install. AATi supplied Nickel Bronze SN93/SL3/280 standard cast metal Antislip stair nosings along with a 300mm deep version of the SN93/SL3/280 and riser plates also in cast nickel bronze.

Stay tuned for the next phase of works when the Crossrail line becomes fully functional at Farringdon.



AATi Special 300mm deep nosings ref SN93/SL3/300 in cast Nickel Bronze.

AATi Riser plates in cast Nickel Bronze