

# AATi

## Project Case Study

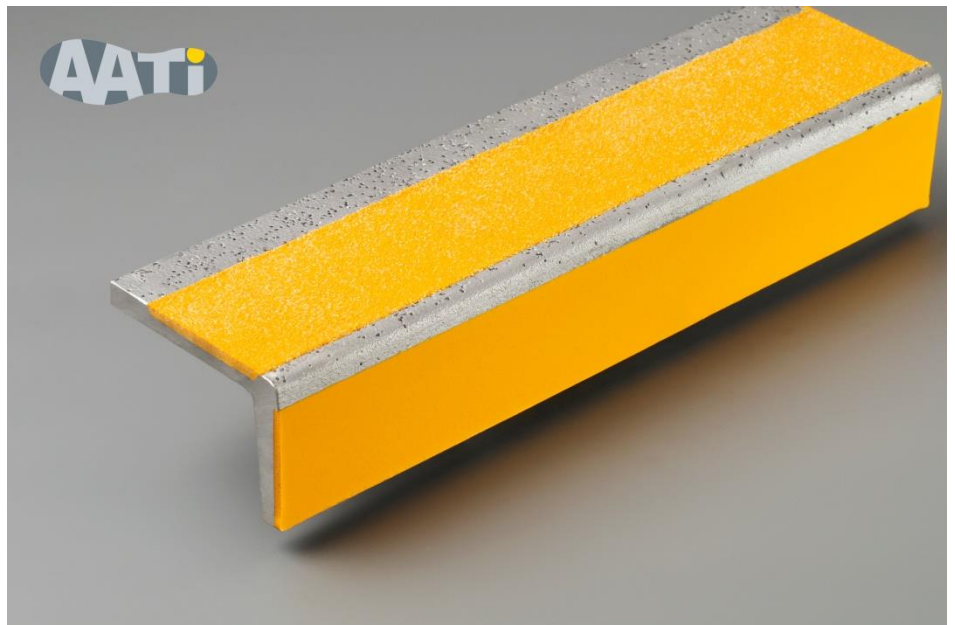
February 2011

### Iconic Gateway to Wales

**Architect: Grimshaw Architects**

**Contractor: Galliford Try**

Grimshaw Architects have achieved international acclaim over the years, with more than one hundred awards to their name. Environmentally viable architecture is at the heart of their management process and design. Now, Grimshaw have redesigned Newport regional station as part of a citywide regeneration master plan. AATi have been specified by Grimshaw to supply all of the aluminium stair nosings ([SN293/WL/84](#)) for this prestigious and high profile project.



Host to the Ryder Cup and gateway to Wales, Newport's upgraded station is divided into two major concourses. The civic side on the north focuses on the needs of commuters. The commercial side on the south is for connecting travellers, day-trippers and tourists. Ticket facilities and platform access are split equally between the two terminals. The spiral form of the station mirrors the journey taken within, and helps to ease traffic flow by guiding passengers from ground level up to the connecting bridge and back down onto the platforms. All the main facilities within this bright and airy space are housed in continuous ETFE and aluminium clad spirals.

Working for main contractor Galliford Try, our stair nosings have been specified and fitted throughout this striking icon of Newport's ongoing regeneration, which will cater for the demands of a growing influx of people.