

AATi Rail

Project case study

2009

Stratford Station

Client: London Underground

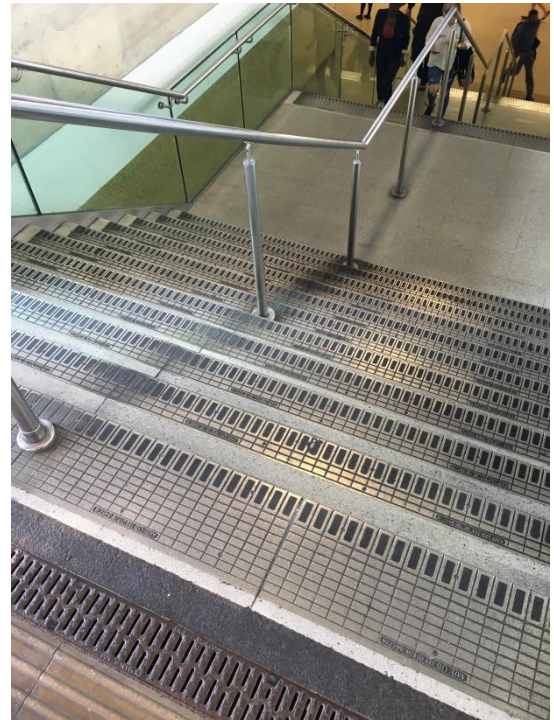
Contractor: DMC Contracts

Product: SN93/SL3/140 + SN93/SL3/280

Material: Nickel Bronze

AATi installed nosings at Stratford Station, 8 years on and still going strong!

Stratford Station interchanges with various railway lines including London Underground, London Overground, Docklands Light Railway (DLR) and is also a National Rail terminus.



Some key figures can be seen below in relation to passenger footfall (based on entry and exit figures);

London Underground: 67 million per annum

DLR: 17 million per annum

Network Rail: 41 million per annum

With a successful reputation for the hardest wearing anti-slip stair nosing on the market, London Underground was under no illusion when selecting AATi products to cope with the increasing passenger footfall.

Somewhat 8 years ago AATi supplied DMC Contracts with the high quality nosing combination, consisting of type SN93/SL3/140 and SN93/SL3/280, both in Cast Nickel Bronze anti-slip stair nosings.

After a recent survey of the station the nosings are still performing to an exceptional standard all these years on.

Stay tuned for further updates which will include the Crossrail extension, due for competition 2019.