

LEADING UK MANUFACTURER OF CAST METAL STAIR NOSINGS & TREADS.

STEP BY STEP SAFETY

WHO WE ARE.

AATi Limited (formerly Antislip Antiwear Treads International Ltd) was formed in 1984 and is part of the FSE Group.

AATi adopted the anti-slip cast metal stair nosing designs traditionally seen on the London Underground. These have been ever present and effective features on the UK rail networks for over 50 years.

Due to the continued successful growth of AATi Limited into new product markets a reorganisation of the company was necessary in 2012. AATi Commercial Limited is now responsible for all projects within the UK non-rail building and construction sector. AATi Limited focuses on the international marketplace and AATi Rail Limited all UK rail clients.

AATi Commercial Limited offers a wide range of products for stairways within Retail, Residential, Heritage and Public Spaces. In addition to the standard profiles casting the profile means that product design features are not constrained by the extrusion process and therefore bespoke features can be designed into a final product, often with the benefit of 3D CAD visualization.

Furthermore, clients and their architects are encouraged to take part in this continuing research and design development procedure. This allows unique products to be developed with an architecturally functional and aesthetically pleasing appearance.

All products are designed to exhibit the same hard-wearing, durable, slip-resistant properties but can include a company logo, company text or a completely unique stair nosing developed specifically for each individual use or requirement.

All products are designed and manufactured in the UK.

We have included some recent case studies to show the variation, complexity and attention to detail for every project we undertake. Please contact us for more information on all our products and services.

WHY US?

Unrivalled Product Offering.

Bespoke UK manufacturing
silicon carbide Anti-slip
encapsulation
Over 150 Designs
3D CAD Visualisation

Saves Money.

Cost justification is easily made due to the longevity of AATi products with nosings typically lasting 20+ years in extreme high footfall locations such as London Underground. Clear savings can be made through not having to buy and install numerous times over this period.

Direct & Ethical Supply Chain.

Design, development and manufacturing is only carried out in the UK to ensure that quality, standards and public & transport regulations are maintained.

Company Pedigree.

AATi products have been used in the UK Rail sector for over 50 years. AATi Commercial is continuously developing its product range, tailoring to suit client requirements whilst exhibiting the same longevity and hard wearing/heavy duty characteristics as our existing profiles.

Safety.

Taking into consideration statutory and client design requirements, AATi has a stringent design philosophy; as inevitable wear takes place this only occurs in a non-catastrophic way ensuring that client safety is paramount.

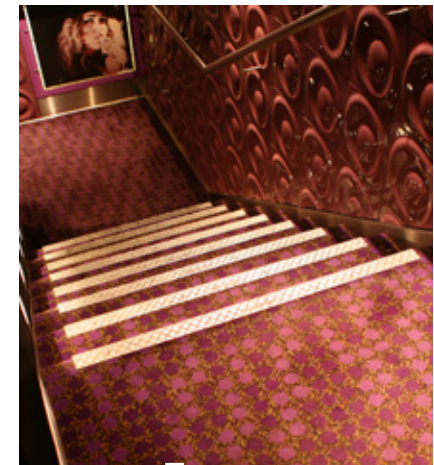
DESIGN.

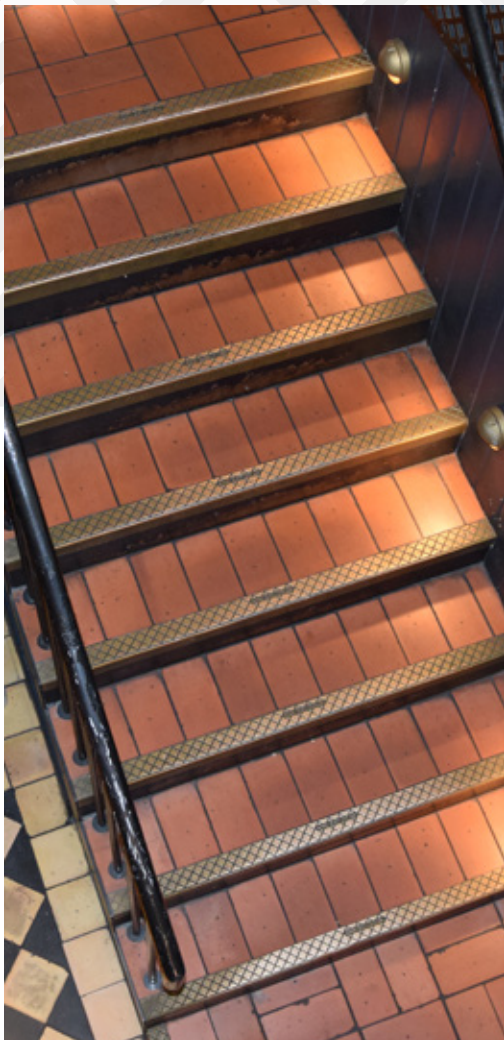
All AATi products include a cast profile with encapsulated silicon carbide in the wearing surface. This ensures the pedestrian has the very best anti-slip foot contact on the stairway, both at initial contact and as full body load is put on to and leaves the step.

AATi products retain extremely high Slip Resistance Values (SRV) or more commonly referred to as Pendulum Test Values (PTV) in both wet and dry conditions, typically achieving PTV of between 40 & 70 points.

AATi products optimise wet and poor-weather anti-slip performance by easily dispersing water, thawing winter products and cleaning fluids from the foot contact area.

AATi have also developed an extensive range of products to ensure that a suitable colour contrast can be achieved for any application. The Sightline™ and Wideline™ products have been tailor-made to exhibit a wide range of Antislip coloured inserts from the RAL colour chart. AATi can also provide Light Reflectance Values (LRV's) for all plain metal Antislip stair nosing products which are self-coloured. Client safety is paramount.







01376 346 278 | www.aati.co.uk

CLIENT
ARGENT

ARCHITECT
Wilkinson Eyre

CUSTOMER
Maylim Limited

PRODUCT
SN30/60 + Floor Plates

MATERIAL
Gunmetal


The frames were joined by a common spine of cylindrical Cast Iron Columns hence the triplets reference.

The gasworks was decommissioned in the late 20th century and the Triplets have now been restored and currently reside in their new home north of Regents Canal, facilitating new studio apartments.

For the new renovation, it would have been a shame not to include any cast metal components, which have been deeply imbedded into London's habitat over the years. AATi were on hand to deliver Cast Gunmetal SN30/60 anti-slip stair nosings along with curved Gunmetal anti-slip Floor Plates.

These Floor Plates suit the external radius of the Gas Holder Triplets, and include secret fixings enabling them to be cast into the concrete substrate without displaying any visible accessories.

KINGS CROSS TRIPLETS.



The Kings Cross Triplets also known as Gas Holders 10, 11 & 12 were originally built between 1860-1867. They were constructed to store the local town gas for the St Pancras Gasworks which was the largest gasworks in London.

QUEEN ELIZABETH II JUBILEE PLAQUE.

On February 29, 2012 Her Majesty, Queen Elizabeth II unveiled a commemorative Jubilee Greenway Disc just outside the main gates of Buckingham Palace. It marks the beginning of the 60 km Jubilee Greenway walking and cycling route. The route is marked by 542 glass plaques and was created as part of the celebrations for the Queen's Diamond Jubilee.

Besides stair nosings AATi are able to custom make any bespoke product. We work closely with the designers and architects of all projects and are therefore able to design and make whatever items the client requires. We also have an in-house product and CAD design team which means we can adapt existing items or create new ones to suit each customers needs.

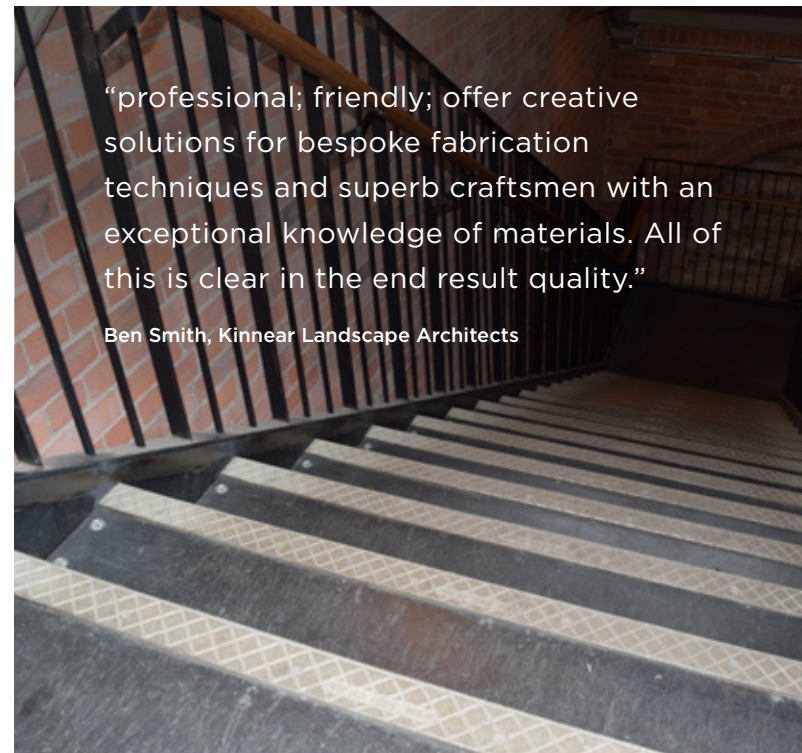
For more information on AATi's bespoke products please visit our website or contact us personally. We will do everything we can to ensure you receive the casting you require.

All AATi cast metal products are designed and manufactured in the UK.



01376 346 278 | www.aati.co.uk





“professional; friendly; offer creative solutions for bespoke fabrication techniques and superb craftsmen with an exceptional knowledge of materials. All of this is clear in the end result quality.”

Ben Smith, Kinnear Landscape Architects

WALTHAMSTOW WETLANDS .

London's largest urban wetland. Only 15 minutes from central London, this 211 hectare site was originally constructed in 1894 to house the steam engine which pumped water through the reservoirs and supplied the Victorian Engine House which is a locally-listed building.

AATi Commercial supplied a selection of cast metal anti-slip stair nosings type SN9/55 and tactile corduroy tiles type TT1/400 throughout the site.

We worked closely with Kinnear Landscape Architects to design and manufacture a selection of Cast Iron components, such as large letters that were fabricated into a sign by DMA Signs Ltd, also Cast Iron Pathway Markers installed by Roof Ltd at the Ferry Lane entrance to the site and with additional items including plaques and signage throughout.

CUSTOMER

Walthamstow
Wetlands

ARCHITECT

Kinnear Landscape
Architects

PRODUCT

SN9/55

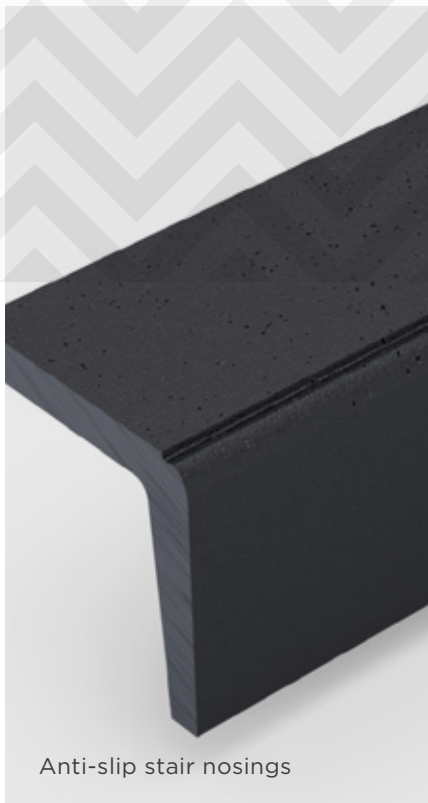
MATERIAL

Aluminium

SPITALFIELD'S CHRIST CHURCH.



The Nicholas Hawksmoor's Christ Church
was built between 1714 -1729.



Anti-slip stair nosings



Ventilation grilles



Cable access covers (bespoke)



ARCHITECT

Dow Jones Architects

CUSTOMER

Coniston Ltd

MATERIAL

Cast Iron Zinc Plated

Closed in 1956 this city landmark was saved from demolition and after vigorous campaigning from the poet Sir John Betjeman among others.

After decades of fundraising, Spitalfields Christ Church was restored to its pre-1850 condition, working from the original building documents where possible, a process that stretched over more than 25 years.

AATi supplied three different products including:

- Anti-slip stair nosings
- Ventilation grilles
- Cable access covers (bespoke)

CUTTY SARK.

The image shows the Cutty Sark, a three-masted sailing ship, on display at the Maritime Museum in London. The ship is dark blue with gold trim and is positioned on a glass and steel platform. The name 'CUTTY SARK' is visible on the side of the hull. The ship's complex rigging and masts are prominent against a blue sky with white clouds. A person is visible on the deck of the ship, and another person is standing on the ground in the foreground. The background features a modern building with a glass facade.

The Cutty Sark was once the most famous of the great tea clippers, the name 'clipper' referring to the fast sailing ships of the nineteenth century that navigated the world's major trading routes.



CLIENT

Cutty Sark Trust

PRODUCT

Bespoke

MATERIAL

Nickel Bronze

The Cutty Sark brought the new tea crop from China, which was incredibly fashionable amongst the tearooms and parlours of Victorian Britain.

The Cutty Sark is now listed by National Historic Ships as part of the National Historic Fleet (the nautical equivalent of a Grade 1 Listed Building) and preserved as a museum ship.

With this in mind and as inevitable wear takes place on certain features of the ship, these items need replacing but have to retain as much of the original characteristics and features as possible.

AATi were on hand to create replica cast metal stair nosings using originals from the ship, as over time, they have severely worn down to a dangerous state. With a few performance enhancing tweaks to the original design, AATi were able to increase the longevity of these unique stair nosings and created fantastic replicas.

HAWKSMOOR.

Hawksmoor is a meat eater's paradise, renowned for their top quality steaks, locally sourced ingredients and seasonal vegetables.

CLIENT

Hawksmoor

ARCHITECT

Macaulay Sinclair

CUSTOMER

Du Boulay Contracts Ltd

PRODUCT

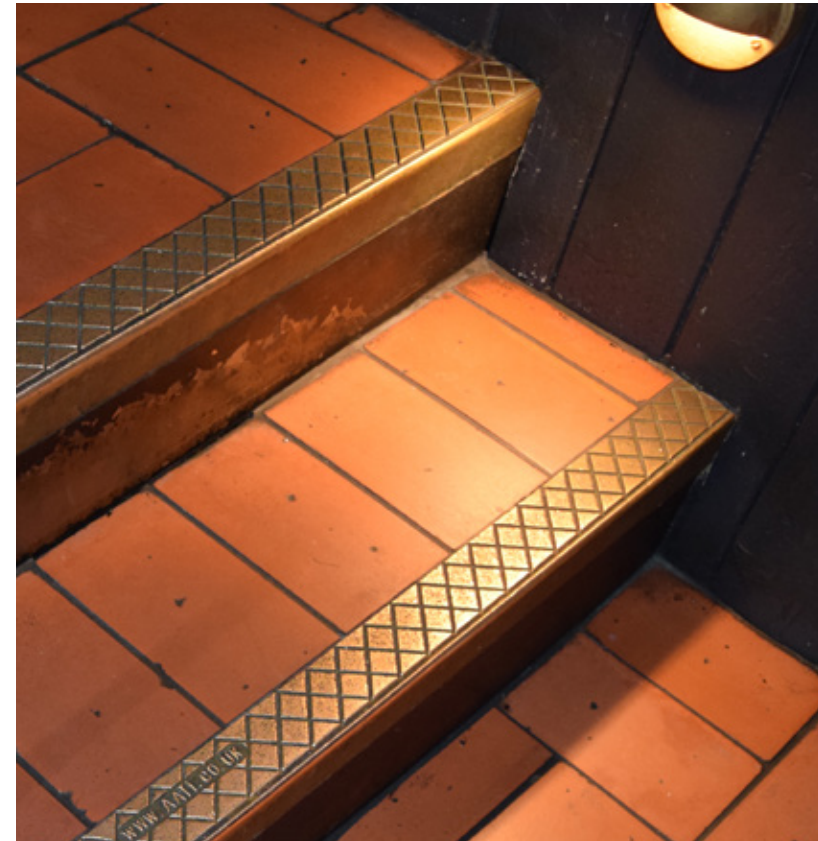
SN9/55

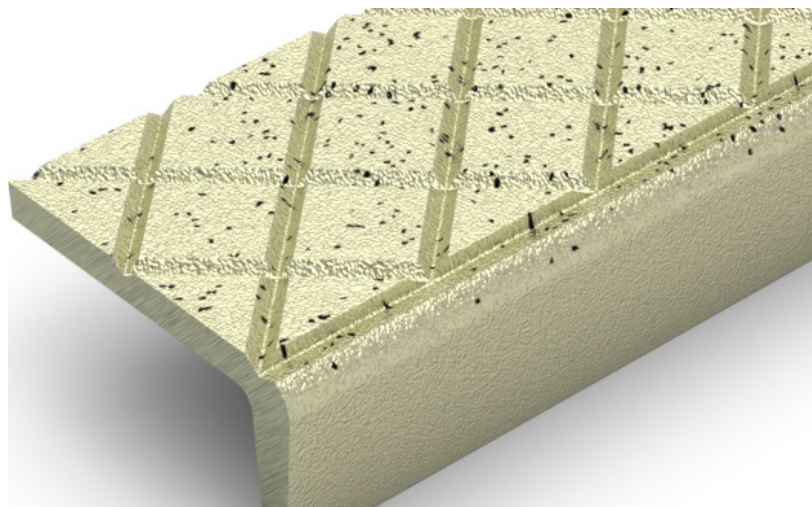
MATERIAL

Gunmetal

The original establishment is located at Spitalfields, London and only a short distance from where English born architect Nicolas Hawksmoor built the Christ Church Spitalfields between 1714 -1729. After a huge restoration project back in 2015 AATi have since supplied numerous products to the Church. For more details see the Spitalfields project case study.

AATi have supplied Du Boulay Contracts Ltd cast metal anti-slip stair nosings for several Hawksmoor restaurants up and down the UK. Du Boulay Contracts Ltd is a specialist commercial fit-out contractor, based in London, who have worked closely with AATi on numerous projects.





CUSTOMER

Beck Interiors

ARCHITECT

EPR Architects
+ Universal Design Studio

PRODUCT

SN30/60

MATERIAL

Nickel Bronze

This London Hotel offers 265 guest rooms, lounge/reception area with retail units, bar, café and art gallery.

The main entrance features AATi cast Nickel Bronze SN30/60 anti-slip stair nosings, this nosing profile is a perfect choice to cope with the heavy foot traffic coming in off the busy Shoreditch High Street.

The SN30/60 anti-slip stair nosing is suitable for many different applications, exhibiting the same longevity and hard wearing/heavy duty characteristics as our larger profile nosings and also adhering to British Standards.



01376 346 278 | www.aati.co.uk





ACE HOTEL.

The Ace Hotel in Shoreditch was the first Ace hotel outside of the USA. Ace Hotel has other venues across New Orleans, Pittsburgh, Los Angeles, Palm Springs, New York, Portland, Seattle & Panama.



CLIENT

Dishoom

ARCHITECT

Macaulay Sinclair

CUSTOMER

Interiors UK Limited

PRODUCT

SN30/60

MATERIAL

Gunmetal

This popular café first came to London in 2012. With a strict no booking policy, you will see long queues of excited customers outside any of their establishments in London, eager to experience Dishooms culinary delights.

AATi have supplied anti-slip stair nosing type - SN30/60 in cast Gunmetal for two sites, the first at London's King Cross and the other in Kensington.

Other Dishoom venues;

- Edinburgh
- Shoreditch
- Carnaby
- Covent Garden



01376 346 278 | www.aati.co.uk



DISHOOM.

5 boundary street

DISHOOM
PARCELS



7

Dishoom is a buzzy destination in London, serving fine Indian Street food coming from the heart of Bombay.

MISSION E2.

When building our Bar at Mission we wanted to achieve a unique look and finish to the bar top. Inspired by being located under a railway arch in Bethnal Green, we realised that the solution was right on our own doorstep.



CUSTOMER

Sager & Wilde

ARCHITECT

Mango & Architecture Design

PRODUCT

SN9/HDLT/140

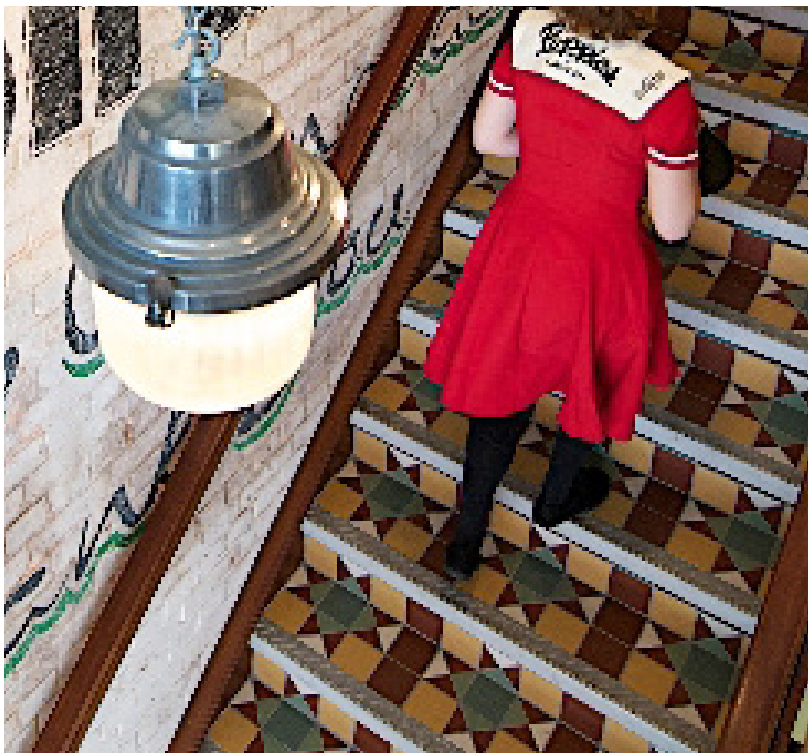
MATERIAL

Gunmetal (polished)

"The TFL nosings are a London staple used on all stations and carry a beautiful repurposed connotation to a point which most people will ask: "I've seen this before, but WHERE?"

"That is great because it makes people think and remember you, this is why we chose to use AATi Antislip nosings for our bar top as it will last forever and age gracefully and also make people remember our bar"

Michael Sager-Wilde



CUSTOMER

Poppies Fish & Chips

ARCHITECT

Avocado sweets

PRODUCT

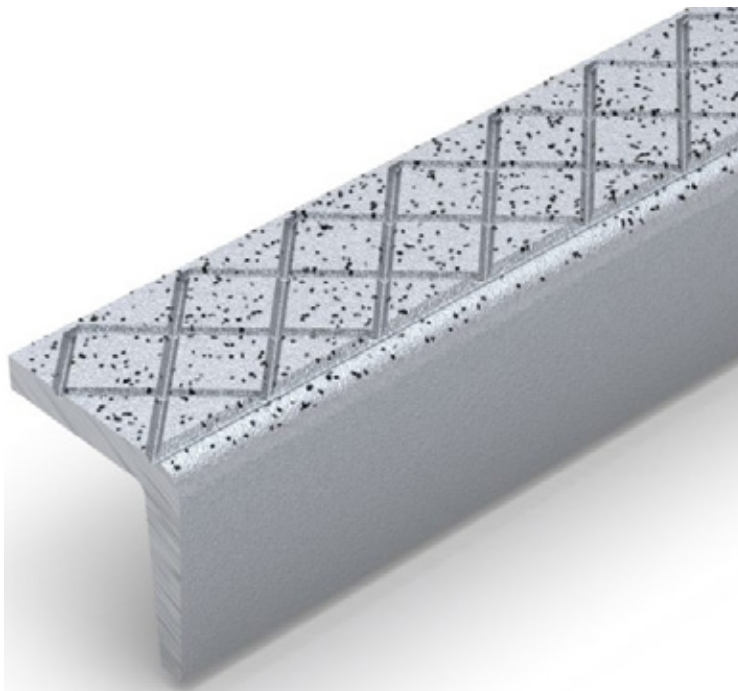
SN9/55

MATERIAL

Aluminium

AATi Commercial was engaged by the interior designers, Avocado Sweets, regarding the supply of suitable Cast metal anti-slip stair Nosings for Poppies Fish and Chip Restaurant in Camden, London.

Designed with 1940s/50s fixtures and fittings. Our SN9/55 Cast Aluminium anti-slip stair nosing was chosen.



POPPIES FISH & CHIPS.

The image shows the interior of a fish and chip shop. On the left, there is a wooden staircase with a colorful geometric tile pattern on the steps. In the foreground, a vintage-style wooden jukebox with a glass-enclosed top and a colorful, patterned base stands prominently. The background features a long bar with various bottles and glasses, and a service counter on the right. A person in a red dress is walking towards the counter. The floor is made of light-colored wooden planks, and the walls are decorated with framed pictures and posters. The overall atmosphere is cozy and traditional.

Located in the heart of Camden, Poppies Fish & Chips must be the most trendy venue to eat your fish & chips! Other Poppies establishments can be found on Hanbury Street and Old Compton Street, London.



Specialists in pedestrian surfaces

AATi Commercial Ltd

11 Swinborne Drive
Springwood Industrial Estate
Braintree
Essex
CM7 2YP

Telephone: (+44) 01376 346278 | (+44) 01376 346666

Fax: (+44) 01376 348480 | Email: info@aatil.co.uk