

AATi Recommended Installation Guidelines

For Retro-fitting SN293/WL/57 nosings to Wood



DATE	14/06/16
REVISION	3

1. Check surface is sound and level.
2. Make good any worn or damaged areas or uneven surfaces with appropriate wood filler.
3. Position AATi nosing onto step in correct position.
4. Spot through holes using 4mm drill bit.
5. Lift off nosing and drill pilot holes through spotted positions using a 4mm drill bit to an appropriate depth of approximately 50-55mm.
6. Clean out dust/dirt from hole.
7. Apply Damp Proof Course (Rubberoid - Hyload original DPC) to cover the entire internal face of the nosing.
8. Place nosing back into position on step and ensure it is solidly bedded.
9. Fix by inserting appropriate length (2inch) countersunk pozi wood screw and tighten to form a secure fixing.

Fig 1. Section view of SN293/WL/57

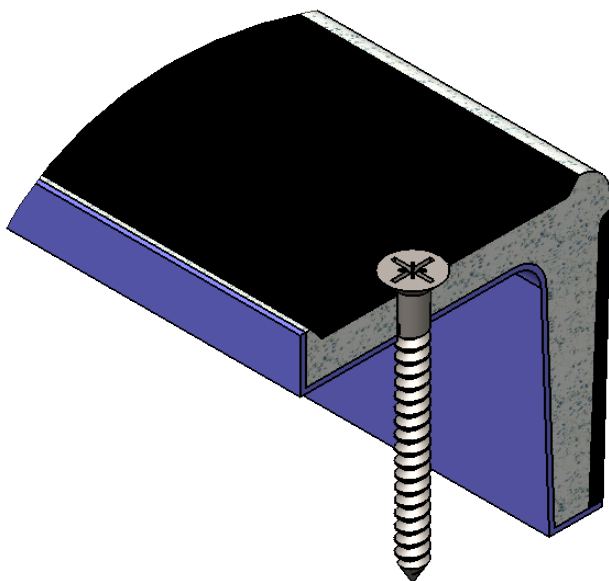
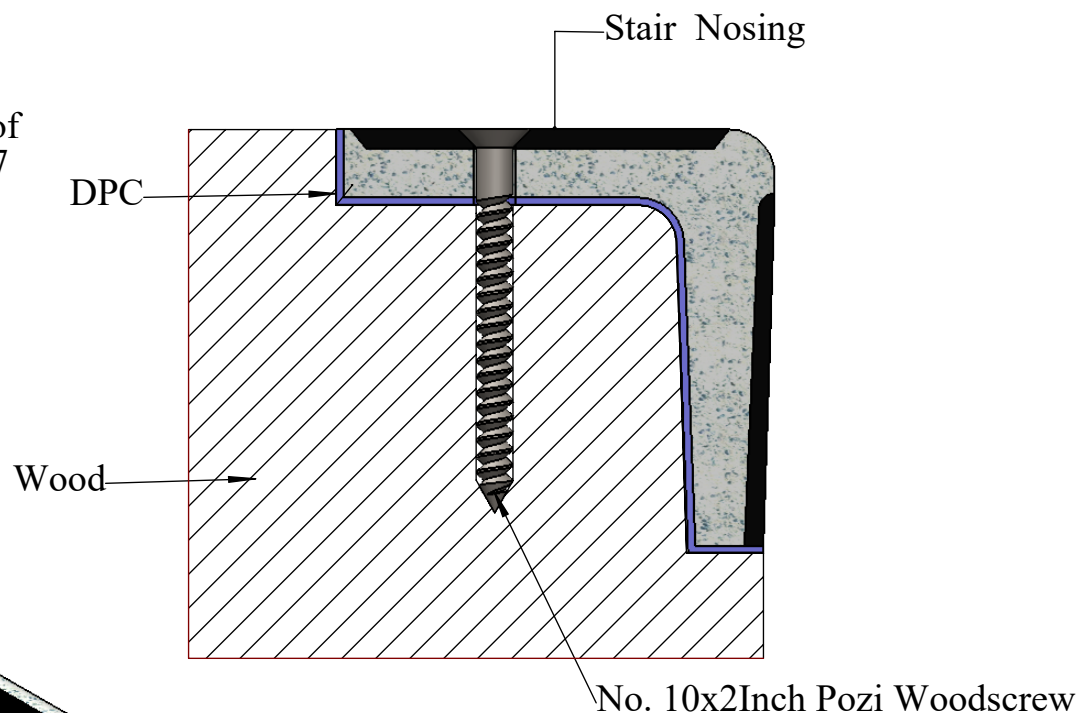


Fig 2. Isometric view of SN293/WL/57 fixing assembly

NB: Nosing's must be installed in such a way that standing water is omitted. Please refer to AATi O&M Manual
All AATi products are subject to our manufacturing tolerances and should be taken into consideration when installing