

AATi Recommended Installation

Guidelines for fixing to concrete



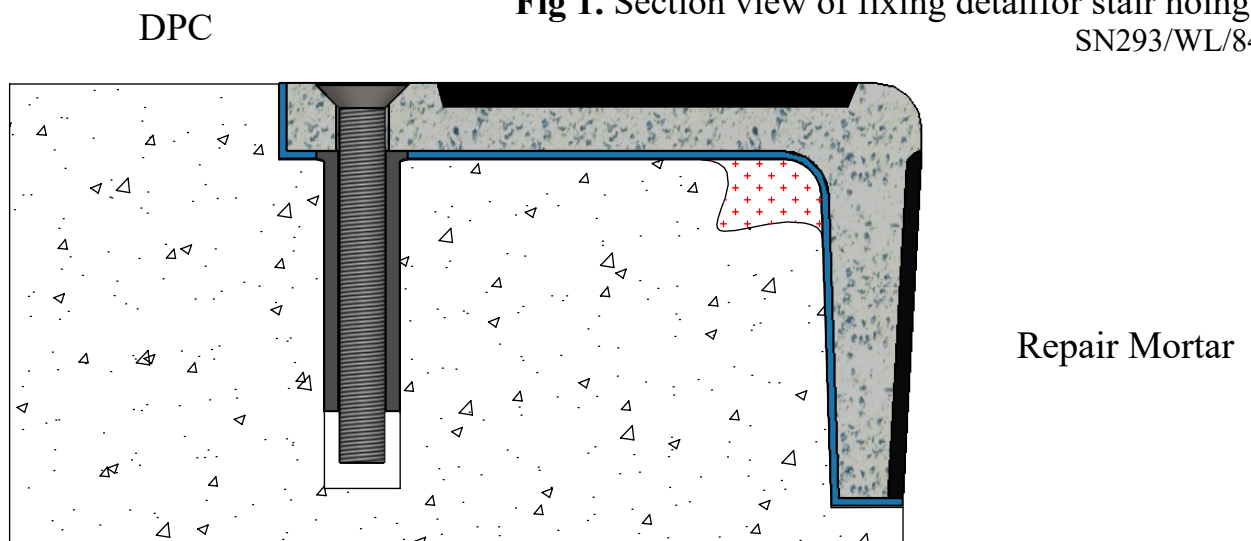
DATE	14/06/16
REVISION	3

1. Check surface is sound and level.
2. Make good any worn or damaged areas or uneven surfaces with Ardex A46 or similar authorised rapid setting and hardening repair mortar (as below).



3. Position AATi nosing onto step in correct position.
4. Spot through holes using 7mm masonry drill bit.
5. Lift off nosing and drill pilot holes through spotted positions using a 13mm drill bit.
6. Clean out dust/dirt or any other contaminants from hole.
7. Push Rubber Rawlnut type 6350 down into concrete substrate.
9. Apply Damp Proof Course (Rubberoid - Hyload original DPC) to cover the entire internal face of the nosing.
9. Place nosing back into position on step ensuring it is fully supported.
10. Fix by inserting appropriate length (50mm) M6 Pozi stainless steel countersunk machine screw and tighten to form a secure fixing.

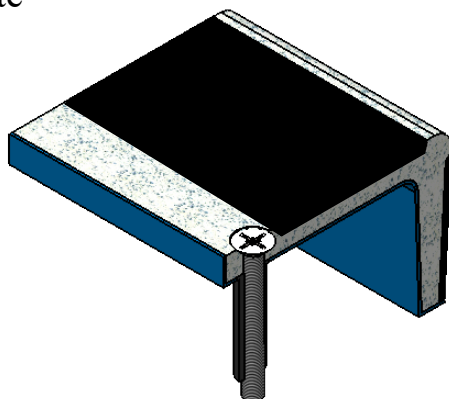
Fig 1. Section view of fixing detail for stair nosing- SN293/WL/84



Concrete

6350 rubber rawlnut

Repair Mortar



M6x50 pozi ss csk m/c screw

Fig 2. Isometric section view of fixing assembly for stair nosing- SN293/WL/84

NB: Nosing's must be installed in such a way that standing water is omitted. Please refer to AATi O&M Manual
All AATi products are subject to our manufacturing tolerances and should be taken into consideration when installing