

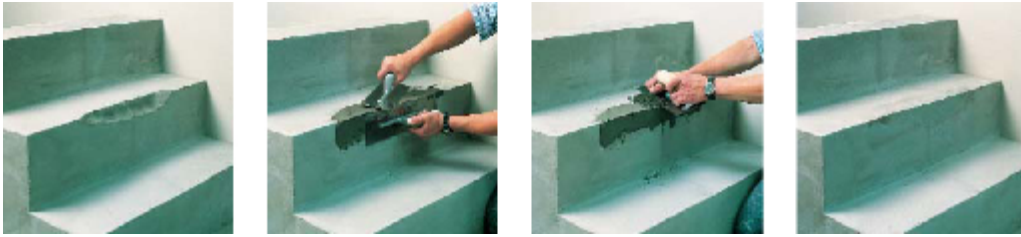
## AATi Recommended Installation Guidelines

### For Retro-fitting SN9/55P nosings to concrete



DATE	15/06/16
REVISION	3

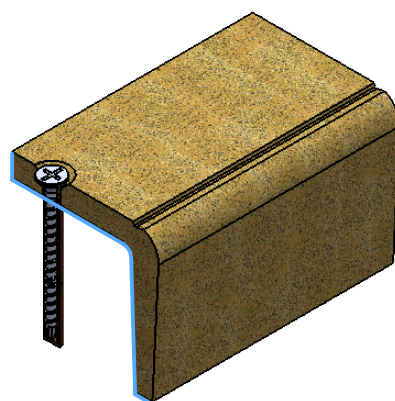
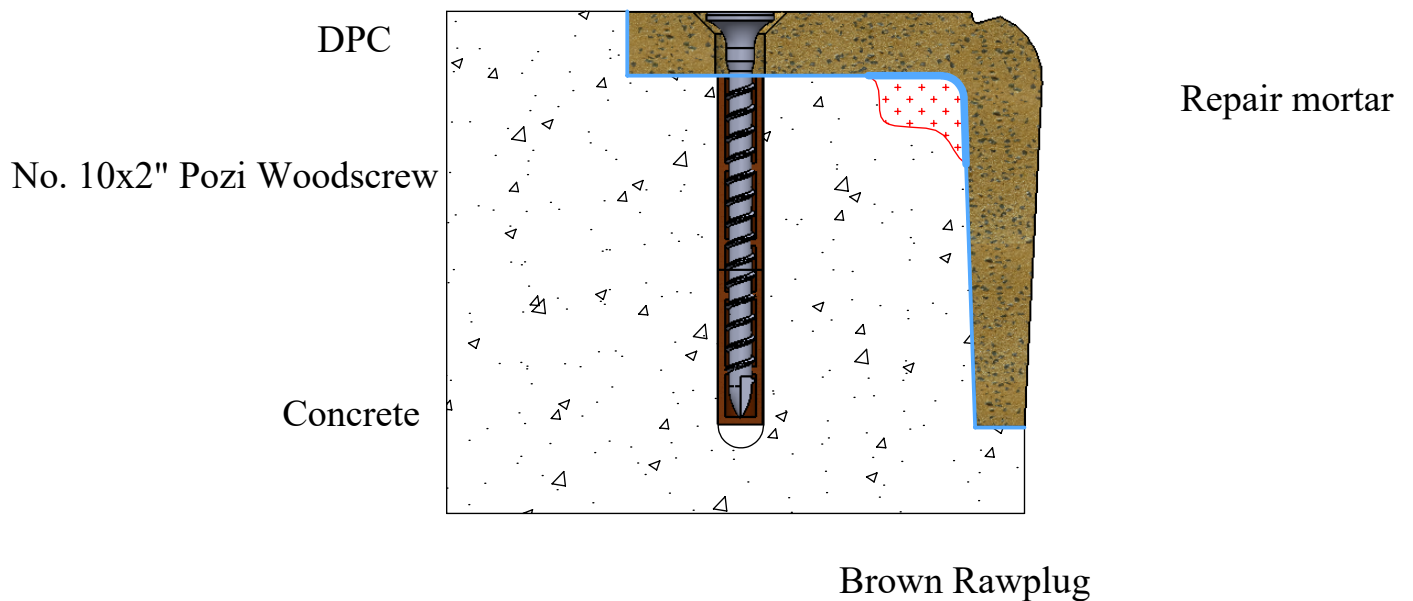
1. Check surface is sound and level.
2. Make good any worn or damaged areas or uneven surfaces with Ardex repair mortar or similar approved (as below).



3. Position AATi nosing onto step in correct position.
4. Spot through holes using 7mm Masonry drill bit.
5. Lift off nosing and drill pilot holes through spotted positions with 7mm Masonry drill bit to an appropriate depth of approximately 50-55mm.
6. Clean out dust/dirt from hole.
7. Insert Brown Rawlplug.
8. Apply Damp Proof Course (Rubberoid - Hyload original DPC) to cover the entire internal face of the nosing.
9. Place nosing back into position on step and ensuring it is fully supported.
10. Fix by inserting appropriate length (2inch) countersunk pozi screw and tighten to form a secure fixing.

**Fig 1.** Section view of SN9/55P fixing detail

Stair nosing



**Fig 2.** Isometric view of SN9/55P fixing assembly.

NB: Nosing's must be installed in such a way that standing water is omitted. Please refer to AATi O&M Manual  
All AATi products are subject to our manufacturing tolerances and should be taken into consideration when installing